

# PEAKLINE 218

## 218

### Sheffield • Bakewell

via Sharrow, Ecclesall, Parkhead, Beauchief, Totley, Owl Bar, Baslow & Chatsworth House

#### Monday to Saturday excluding Public Holidays

	Note	SD-C	SH-C															
Sheffield, Interchange		0730	0730	0830	0940	1010	then at the same times past each hour	40	10		1610	1640	1735	1755	1835			
Sharrow, The Stag's Head		0742	0742	0842	0951	1021		51	21		1622	1652	1747	1807	1846			
Totley, Main Avenue		0803	0803	0903	1006	1036		06	36		1643	1713	1808	1828	1901			
Baslow, Nether End		0816	0816	0916	1019	1049		19	49	until	1656	1726	1821	1841	1914			
Chatsworth House, Main Entrance				0924		1057			57		1704	1726	1829					
Bakewell, Rutland Square		0833	0833	0937	1032	1110		32	10		1717	1739	1842	1854	1926			
Bakewell, Lady Manners School		0840																

#### Sundays from April to October

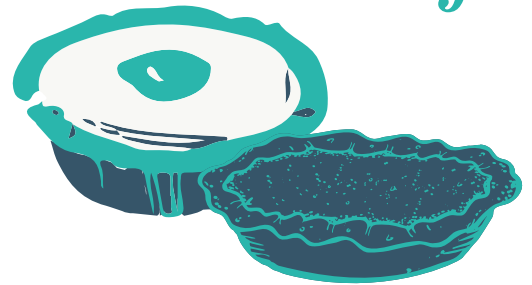
Sheffield, Interchange	0830	0940	1010	then at the same times past each hour	40	10		1640	1735	1755
Sharrow, The Stag's Head	0840	0950	1020		50	20		1650	1745	1805
Totley, Main Avenue	0855	1005	1035		05	35	until	1705	1800	1820
Baslow, Nether End	0908	1018	1048		18	48		1718	1813	1833
Chatsworth House, Main Entrance	0916		1056			56			1821	
Bakewell, Rutland Square	0931	1031	1109		31	09		1731	1844	1846

#### Sundays from November to March

Sheffield, Interchange	0830	0940	1040	1140	1240	1340	1440	1540	1640	1740
Sharrow, The Stag's Head	0840	0950	1050	1150	1250	1350	1450	1550	1650	1750
Totley, Main Avenue	0855	1005	1105	1205	1305	1405	1505	1605	1705	1805
Baslow, Nether End	0908	1018	1118	1218	1318	1418	1518	1618	1718	1818
Chatsworth House, Main Entrance	0916		1126		1326		1526		1726	
Bakewell, Rutland Square	0931	1031	1139	1231	1339	1431	1539	1631	1739	1831

Note: SD-C Service operates on Schooldays only and runs via Calver.  
SH-C Service operates on School Holidays only and runs via Calver.

## Tart or Pudding?



Decide at the old original Bakewell pudding shop

## 218

### Bakewell • Sheffield

via Chatsworth House, Baslow, Owl Bar, Totley, Beauchief, Parkhead, Ecclesall & Sharrow

#### Monday to Saturday excluding Public Holidays

	Note									SD-C	SH-C					NFS	FS			
Bakewell, Lady Manners School										1540										
Bakewell, Rutland Square		0630	0730	0910	0940	1013	then at the same times past each hour	40	13		1513	1540	1620	1640	1733	1755	1855	1933	1953	
Chatsworth House, Main Entrance					0952			52					1652	1652	1807	1907				
Baslow, Nether End		0642	0742	0922	1000	1025		00	25	until	1525	1600	1600	1637	1700	1745	1815	1915	1945	2005
Totley, Main Avenue		0656	0756	0936	1014	1039		14	39		1539	1614	1614	1651	1714	1759	1829	1929	1959	2019
Sharrow, The Stag's Head		0714	0814	0951	1029	1054		29	54		1554	1629	1629	1711	1735	1820	1844	1944	2014	2034
Sheffield, Interchange		0726	0826	1000	1038	1103		38	03		1603	1638	1638	1721	1745	1828	1852	1952	2022	2042

#### Sundays from April to October

Bakewell, Rutland Square	0940	1013	then at the same times past each hour	40	13		1640	1733	1755	1855
Chatsworth House, Main Entrance	0952			52			1652		1807	1907
Baslow, Nether End	1000	1025		00	25	until	1705	1745	1815	1915
Totley, Main Avenue	1014	1039		14	39		1719	1759	1829	1929
Sharrow, The Stag's Head	1029	1054		29	54		1734	1812	1842	1942
Sheffield, Interchange	1038	1103		38	03		1743	1820	1850	1950

#### Sundays from November to March

Bakewell, Rutland Square	0943	1043	1143	1240	1343	1440	1543	1640	1743	1840
Chatsworth House, Main Entrance				1252		1452		1652		1852
Baslow, Nether End	0955	1055	1155	1300	1355	1500	1555	1700	1755	1900
Totley, Main Avenue	1009	1109	1209	1314	1409	1514	1609	1714	1809	1914
Sharrow, The Stag's Head	1024	1124	1224	1329	1424	1529	1624	1729	1822	1927
Sheffield, Interchange	1033	1133	1233	1338	1433	1538	1633	1738	1830	1935

Note: SD-C Service operates on Schooldays only and runs via Calver.  
SH-C Service operates on School Holidays only and runs via Calver.  
FS Journey operates on Fridays and Saturdays only between 1st April and 30th October.  
NFS Journey does not operate on Fridays and Saturdays between 1st April and 30th October.

